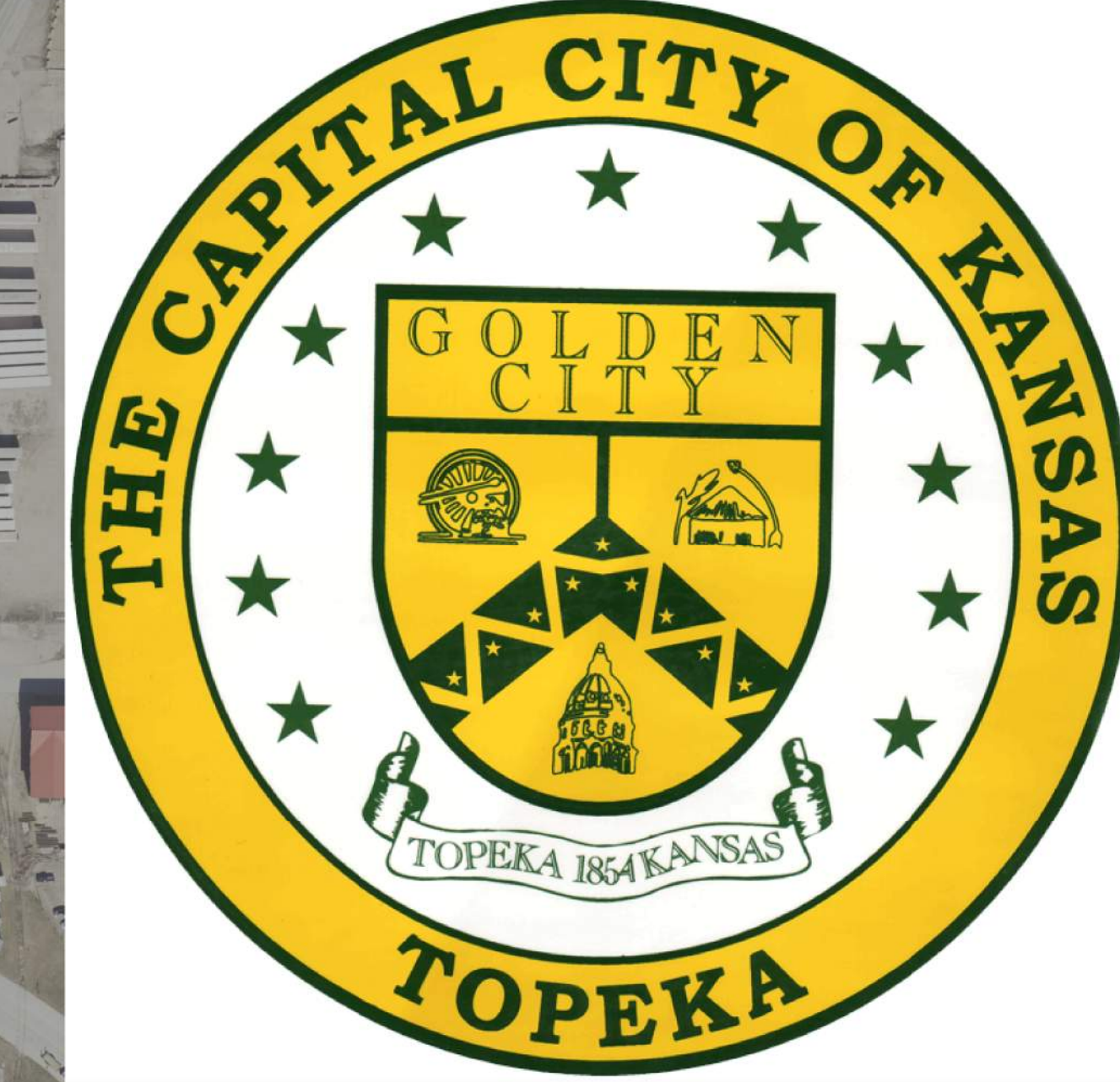
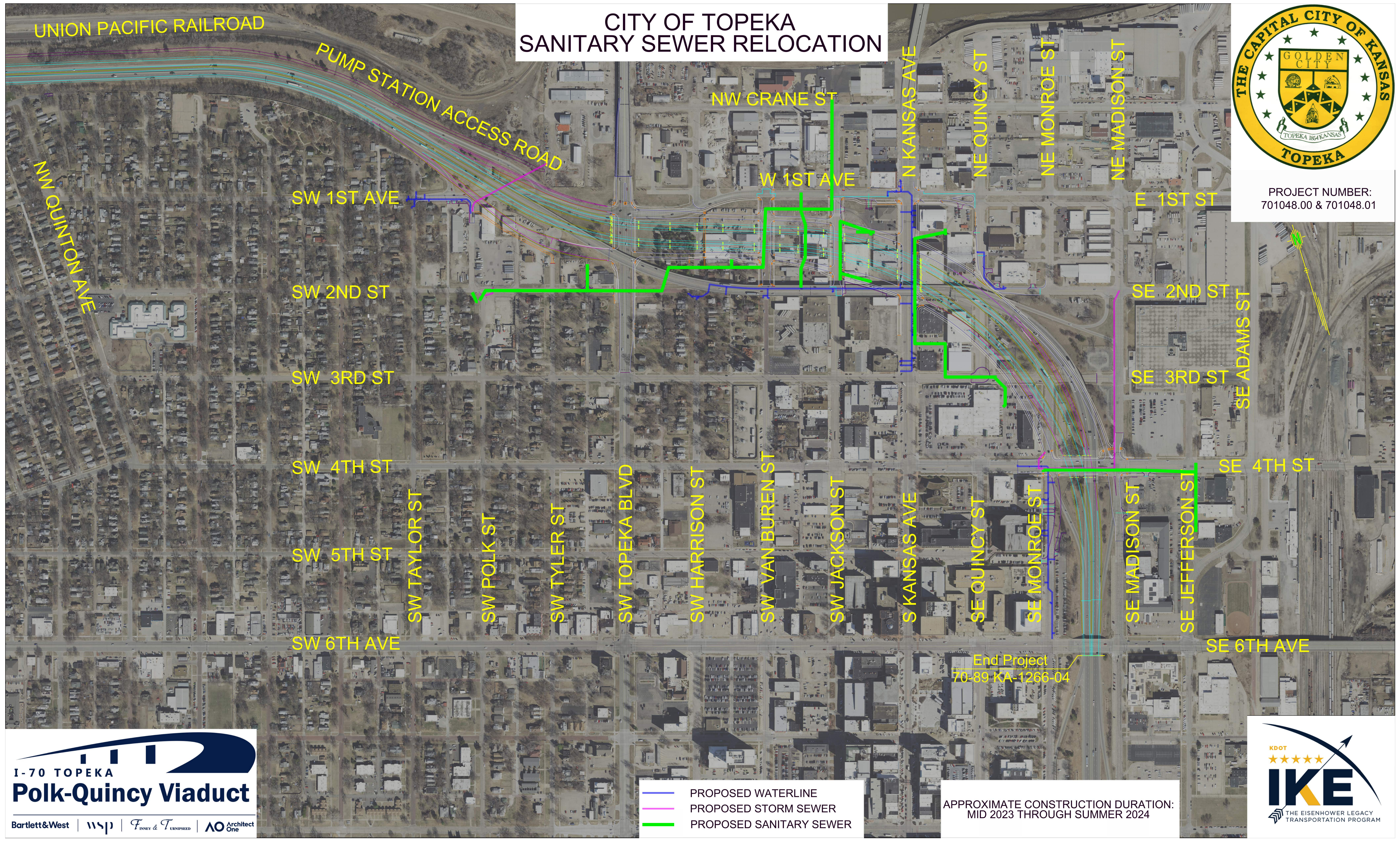


CITY OF TOPEKA SANITARY SEWER RELOCATION



PROJECT NUMBER:
701048.00 & 701048.01



I-70 TOPEKA
Polk-Quincy Viaduct

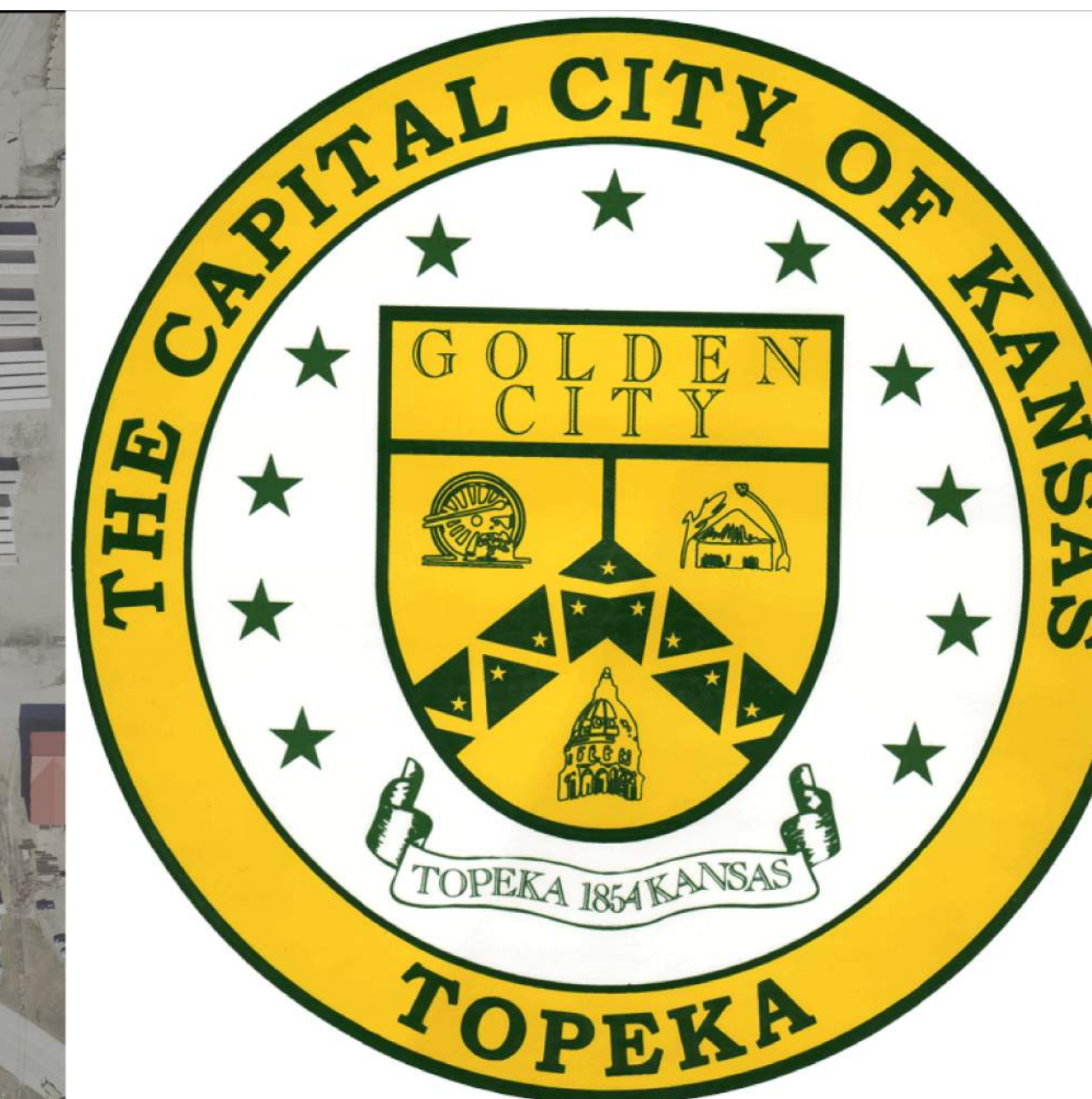
Bartlett & West | wsp | Finney & Turnerseed | AO Architect One

- PROPOSED WATERLINE
- PROPOSED STORM SEWER
- PROPOSED SANITARY SEWER

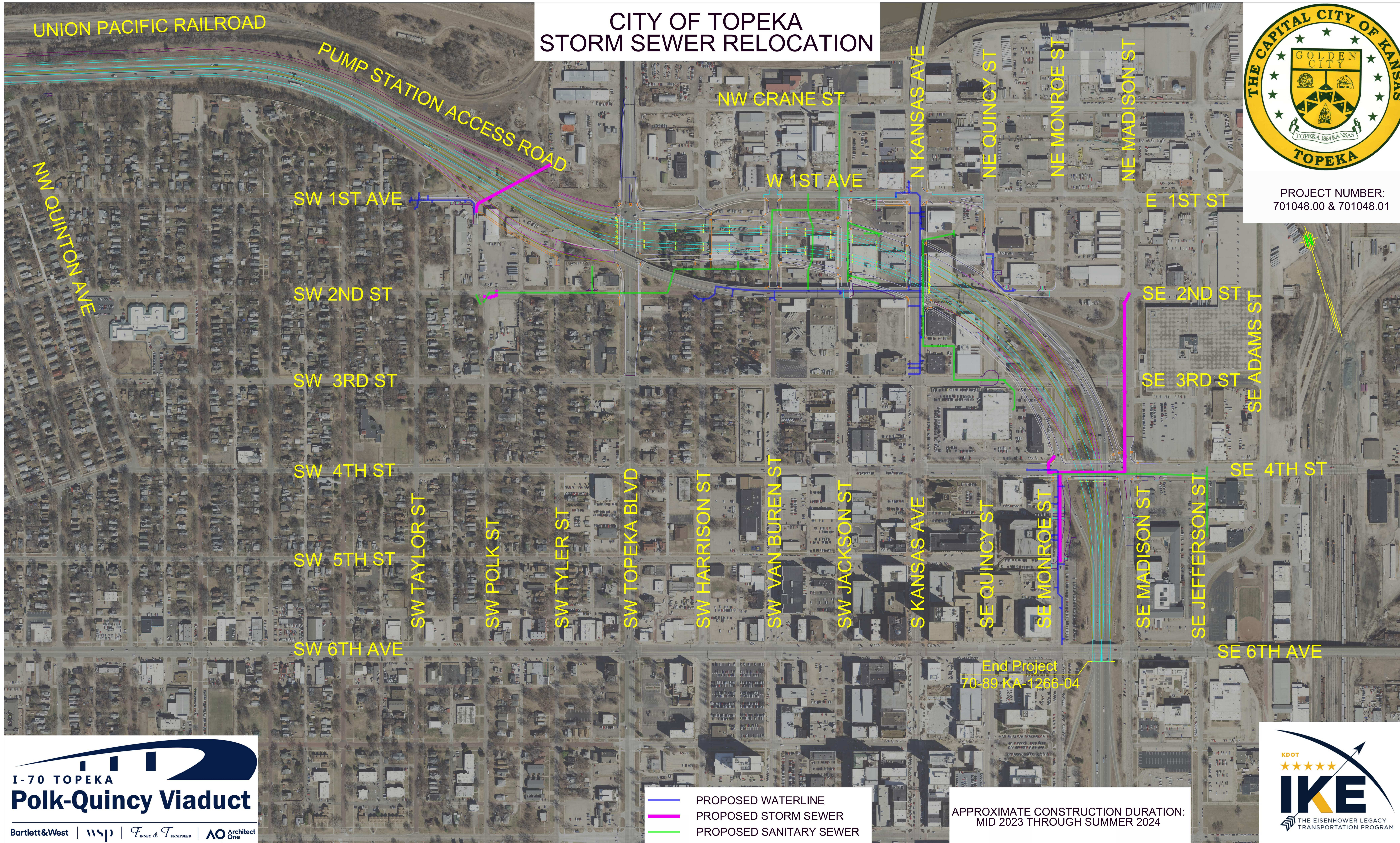
APPROXIMATE CONSTRUCTION DURATION:
MID 2023 THROUGH SUMMER 2024



CITY OF TOPEKA STORM SEWER RELOCATION



PROJECT NUMBER:
701048.00 & 701048.01



I-70 TOPEKA
Polk-Quincy Viaduct

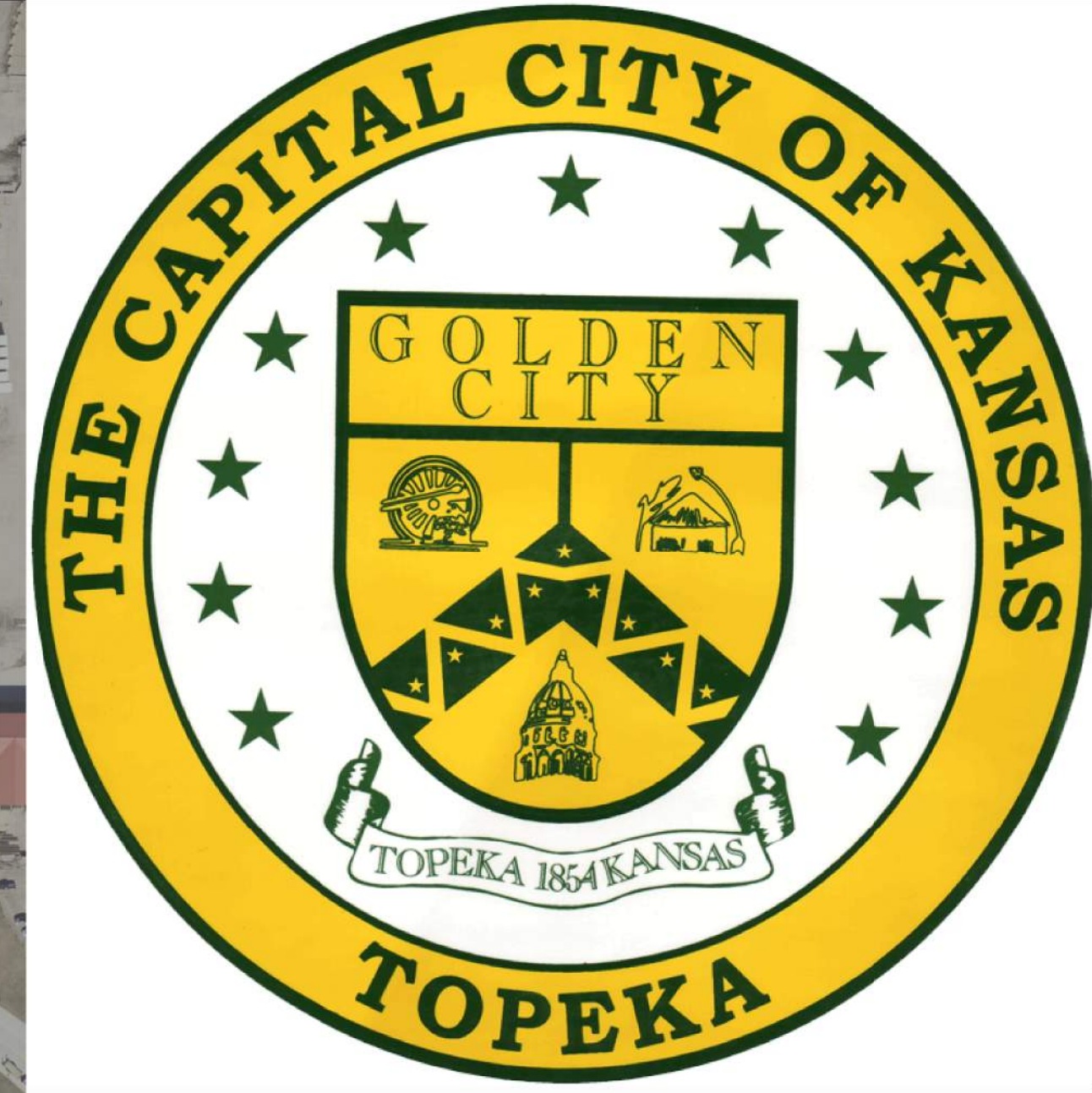
Bartlett & West | wsp | Finney & Turner | AO Architect One

- PROPOSED WATERLINE
- PROPOSED STORM SEWER
- PROPOSED SANITARY SEWER

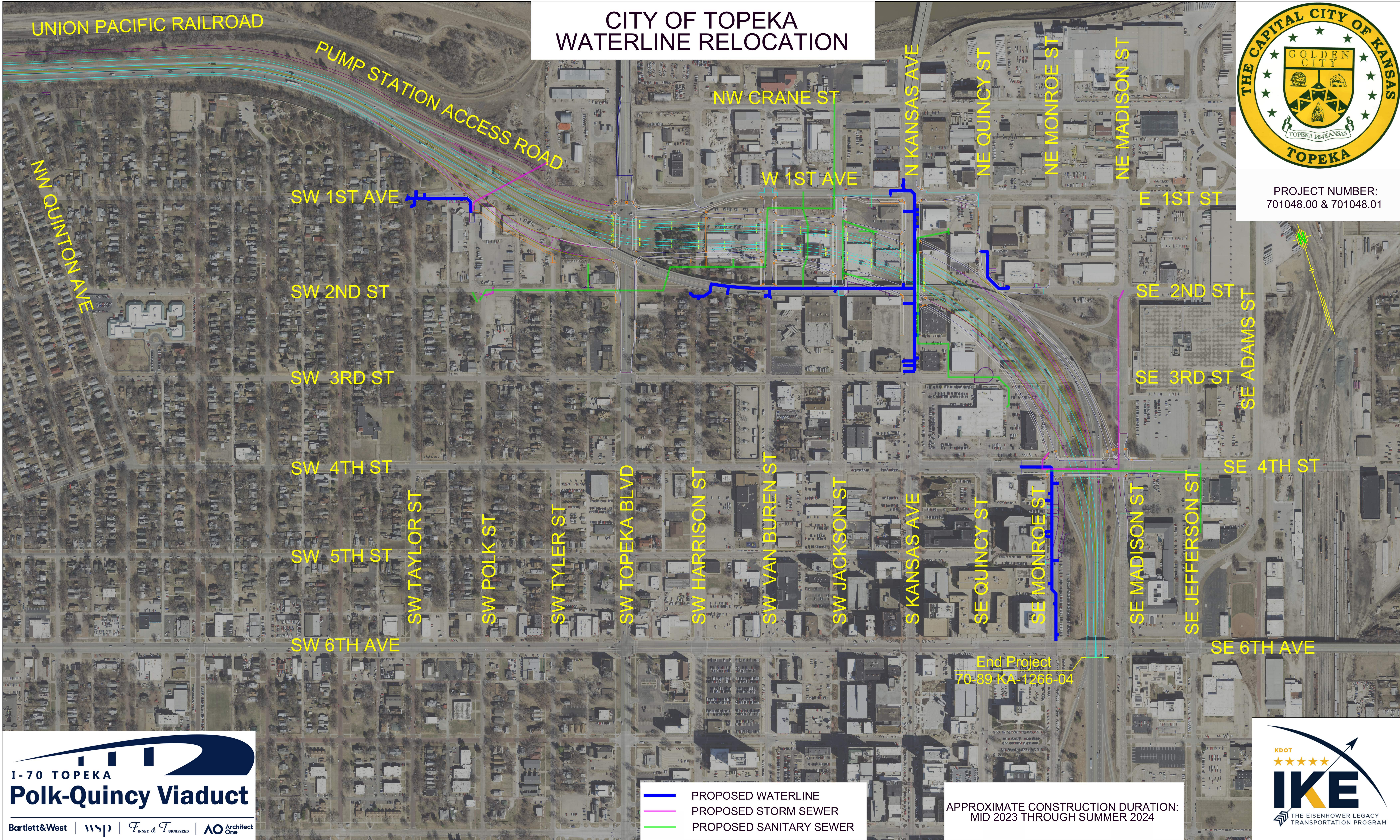
APPROXIMATE CONSTRUCTION DURATION:
MID 2023 THROUGH SUMMER 2024



CITY OF TOPEKA WATERLINE RELOCATION



PROJECT NUMBER:
701048.00 & 701048.01



**I-70 TOPEKA
Polk-Quincy Viaduct**

Bartlett & West | wsp | FINNEY & TURNER | AO Architect One

KDOT
★★★★★
IKE
THE EISENHOWER LEGACY
TRANSPORTATION PROGRAM